



SLIVR 18 Recessed LED

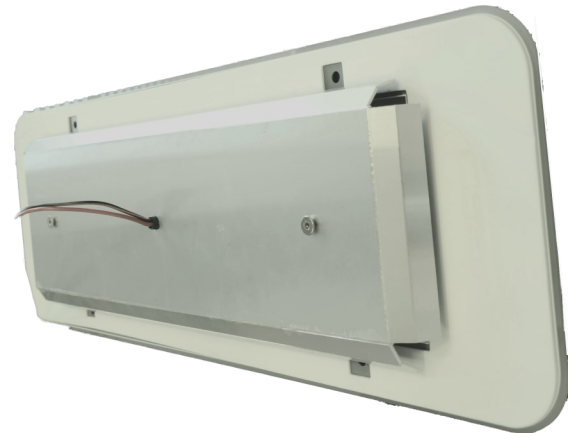
PRODUCT DESCRIPTION:

The SLIVR18 is a high-performance recessed LED lighting fixture designed to meet your sleek styling needs. It features a solid state aluminum body that functions as its own heatsink to ensure maximum thermal dissipation and LED longevity. Impact resistant polycarbonate lens is frosted to ensure even diffusion, and can be customized for volume orders. SLIVR18 leverages a high quantity of LEDs while maintaining a low recessed profile and comes standard with high color rendering index exceeding CRI90 for the most color stringent needs. On board regulation minimizes with variances in battery systems creating a constant regulated output.



FEATURES:

- CRI90 Standard
- Impact and UV Resistant Polycarbonate lens
- Diffused lighting
- 12V regulated input
- Flicker-free internal regulation
- High longevity LEDs
- Range of CCT options available
- Lightweight



CONSTRUCTION:

- Aluminum body and heatsink
- frosted polycarbonate lens for impact resistance and diffusion

PART NUMBER ORDERING OPTIONS										
Standard Part	Size	Weight (lbs)	Volts (DC)	Watts @12V	Color (CCT)	Delivered Lumens	CRI	Lumens per Watt	Lens	Run Temp Storage Temp
SLIVR18	18"L x 6"W x 1" D	3.0	10-14	15.6	30 (3000K) 40 (4000K) 50 (5000K) 65 (6500K)	1050	90	67	PC	-30°C to 45°C -30°C to 80°C
STANDARD CONFIGURATION										
SLIVR18	18"L x 6"W x 1" D	3.0	10-14	15.6	50 (5000K)	1050	90	67	PC	-30°C to 45°C -30°C to 80°C

Shop standard configurations in our [webstore](#) or [contact us](#) for a custom quote

Disclaimer: Subject to minimums and price changes

Phone: 800-340-6842 | Web: www.RidgebackLighting.com | Email: sales@ridgebacklighting.com

Rev: July 2024